

# BLUE LAKE RESIDENTIAL

A REPLAT OF A PORTION OF PARCEL 2, BOCA TECHNOLOGY CENTER PLAT 1  
RECORDED IN PLAT BOOK 96, PAGE 178, OF THE PUBLIC RECORDS OF PALM BEACH COUNTY, FLORIDA  
LYING IN SECTION 12, TOWNSHIP 47 SOUTH, RANGE 42 EAST  
CITY OF BOCA RATON, PALM BEACH COUNTY, FLORIDA.  
(FEBRUARY, 2007)

RECORD PLAT PREPARED BY:  
**Sun-Tech Engineering, Inc.**  
Engineers - Planners - Surveyors  
Certificate of Authorization Number LB 7019

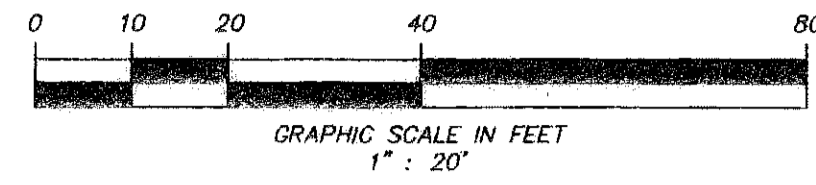
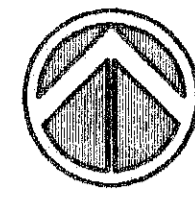


1600 West Oakland Park Boulevard  
Ft. Lauderdale, FL 33311  
E-Mail: suntech@suntecheng.com

Phone (954) 777-3123  
Fax (954) 777-3114

STATE OF FLORIDA  
COUNTY OF PALM BEACH } SS  
THIS PLAT WAS FILED FOR RECORD  
AT \_\_\_\_\_ THIS \_\_\_\_\_  
DAY OF \_\_\_\_\_ 2007, AND DULY  
RECORDED IN PLAT BOOK \_\_\_\_\_  
ON PAGES \_\_\_\_\_ THROUGH \_\_\_\_\_

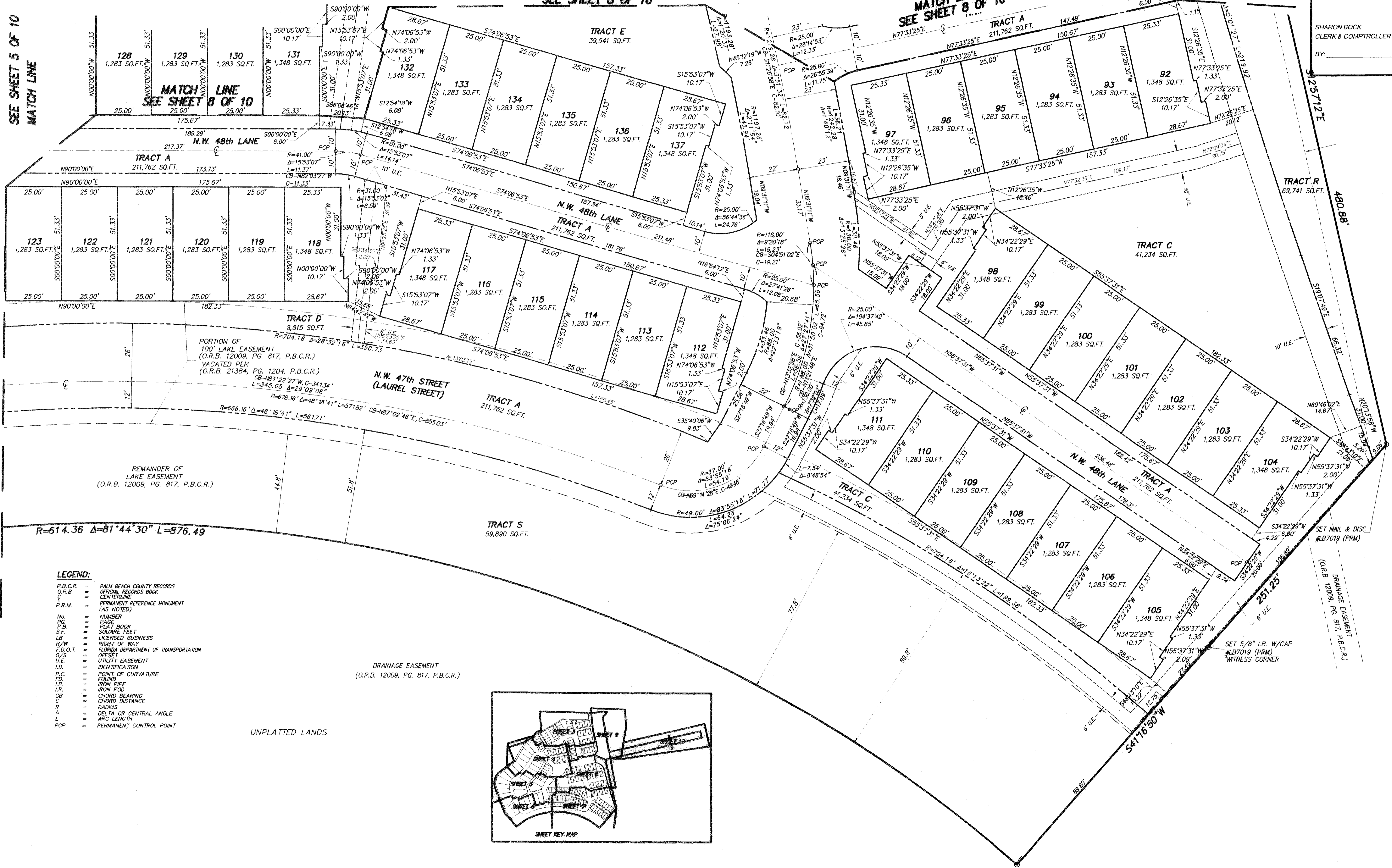
SHARON BOCK  
CLERK & COMPTROLLER  
BY: \_\_\_\_\_



SEE SHEET 5 OF 10  
MATCH LINE

MATCH LINE  
SEE SHEET 8 OF 10

MATCH LINE  
SEE SHEET 8 OF 10

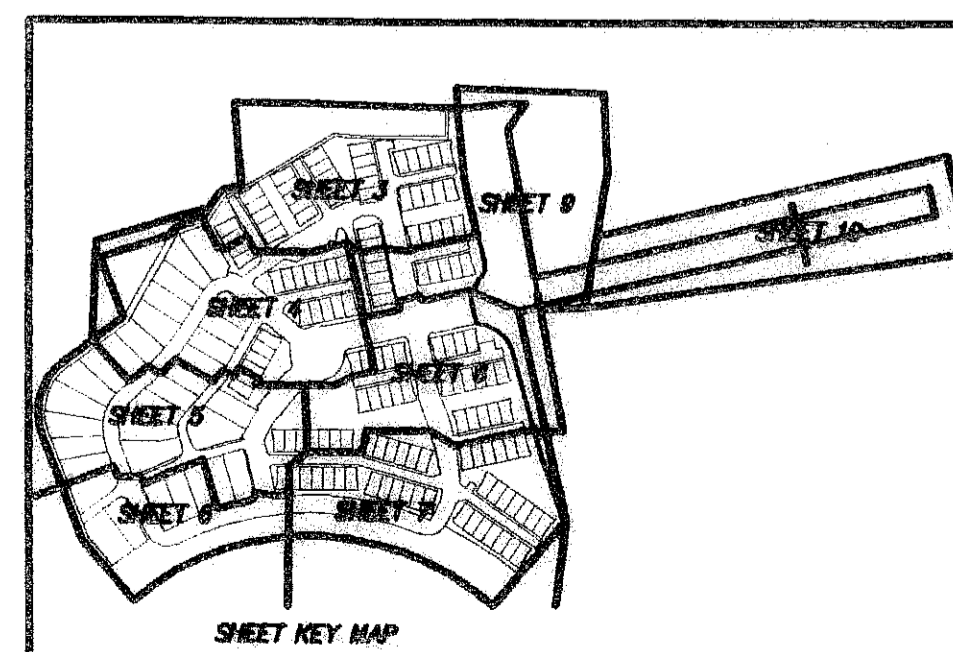


**LEGEND:**

- P.B.C.R. = PALM BEACH COUNTY RECORDS
- O.R.B. = OFFICIAL RECORDS BOOK
- C = CENTERLINE
- P.R.M. = PERMANENT REFERENCE MONUMENT (AS NOTED)
- No. = NUMBER
- P.B. = PLAT BOOK
- S.F. = SQUARE FEET
- L.B. = LICENSED BUSINESS
- R/W = RIGHT OF WAY
- F.D.O.T. = FLORIDA DEPARTMENT OF TRANSPORTATION
- O/S = OFFSET
- U.E. = UTILITY EASEMENT
- I.D. = IDENTIFICATION
- P.C. = POINT OF CURVATURE
- F.I. = FOUND
- I.P. = IRON PIPE
- I.R. = IRON ROD
- C.B. = CHORD BEARING
- C. = CHORD DISTANCE
- R. = RADIUS
- Δ = DELTA OR CENTRAL ANGLE
- L. = ARC LENGTH
- PCP = PERMANENT CONTROL POINT

DRAINAGE EASEMENT  
(O.R.B. 12009, PG. 817, P.B.C.R.)

UNPLATTED LANDS



SET NAIL & DISC #LB7019 (PRM)  
DRAINAGE EASEMENT (O.R.B. 12009, PG. 817, P.B.C.R.)  
SET 5/8" I.R. W/CAP #LB7019 (PRM) WITNESS CORNER